

### Dual Mounts

**PMA-DM2**  
4' Open Array &  
KVH 18"

**PMA-DM2-TT250**  
4' Open Array &  
KVH FB250(14")

**PMA-DM2-M3**  
4' Open Array &  
KVH M2 / M3

**PMA-DM2-M3-TT500**  
4' Open Array & KVH  
32"-35" (Please Call)

**PMA-DM2-M7**  
4' Open Array &  
KVH 24"

**PMA-DM2-M3 + ADAM31**  
4' Open Array &  
KVH M1(13.5")

**PMA-DM1-TT250**  
For KVH FB250(14") &  
2kW or 4kW domes

**PMA-DM1**  
For KVH 18" and 2kW  
or 4kW domes

**PMA-DM1-M3-TT500**  
For KVH 32"-35" &  
2kW or 4kW domes  
(Please Call)

**PMA-DM1-M3**  
For KVH M2 / M3 and  
2kW or 4kW domes

**PMA-DM1-M3 + ADAM31**  
4' Open Array &  
KVH M1(13.5")

**PMA-DM1-M7**  
For KVH 24" and  
2kW or 4kW domes

(Light Bars Sold Separately)



### Adjustable Radar Arch

#### ARCH-1 SERIES BRIDGES OVER ANY CLOSED RADOME

- ARCH-1** (Plate to fit KVH 18" Satdomes)
- ARCH-1M3** (Plate to fit KVH M2/M3)
- ARCH-1M3 + ADAM31** (Plate to fit KVH M1)
- ARCH-1M7** (Plate to fit KVH 24" Satdomes)
- ARCH-1TT250** (Plate to fit KVH FB 250 (14") & F33)



#### ARCH-2 SERIES BRIDGES OVER ANY OA UP TO 4'

- ARCH-2** (Plate to fit KVH 18" Satdomes)
- ARCH-2M3** (Plate to fit KVH M2/M3)
- ARCH-2M3 + ADAM31** (Plate to fit KVH M1)
- ARCH-2M7** (Plate to fit KVH 24" Satdomes)
- ARCH-2TT250** (Plate to fit KVH FB 250 (14") & F33)

**NEW**

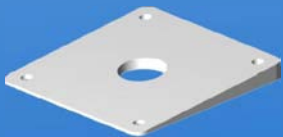


(Light Bars Sold Separately)

### Dual Mount / Adjustable Arch Accessories

#### Base Wedges

**PM-W-10** (4° for 10x10 base)

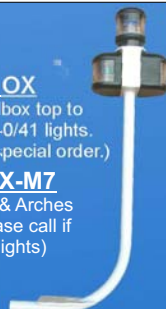


#### DM-LTB-BOX

(1 1/4" Light bar w/ box top to fit Aqua Sig. Series 40/41 lights. Lights available upon special order.)

#### DM-LTB-BOX-M7

(Fits Dual Mounts & Arches ending in M7. Please call if using different lights)



#### DM-LTB-100

(1 1/4" Light bar w/ Perko 1197 Masthead / All-Round Light Installed)



#### DM-LTB-FN

(2" Light bar For Flir Navigator & Aqua Sig. Series 40/41 Lights)

#### DM-LTB-FN-M7

(Fits Dual Mounts & Arches ending in M7)

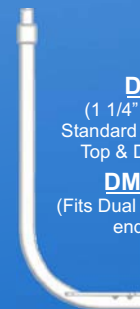


#### DM-LTB

(1 1/4" Light bar with Standard 1 x 14 Threaded Top & Donut Adapter)

#### DM-LTB-M7

(Fits Dual Mounts & Arches ending in M7)



### Mast Platforms



**SM-18-A**  
KVH M2 / M3 &  
KVH 18"



**SM-18-U**  
KVH M1

**SM-10-A**  
Tracphone 252



**SM-10A+SVTTADAPT**  
KVH FB 250 (14") & F33



# KVH

## Satellite Power Mounts



### Aft Leaning Power Mount

- PMA-5-7A (5" Tall / Fits Tracphone 252)
- PMA-5-7A+SVTTADAPT (5" Tall/Fits KVH FB250(14") & F33)
- PMA-5-M8 (5" Tall/ Fits KVH M2 / M3)
- PMA-12-7A (12" Tall/Fits Tracphone 252)
- PMA-12-7A+SVTTADAPT (12" Tall/Fits KVH FB250 (14") & F33)
- PMA-12-10B (12" Tall / Fits KVH 18")
- PMA-18-10B (18" Tall/ Fits KVH 18")
- PMA-12-10C (12" Tall/ Fits KVH C3)
- PMA-12-10D (12" Tall/ Fits KVH 24")
- PMA-12-M8 (12" Tall/ Fits KVH M2 / M3)
- PMA-18-M8 (18" Tall/ Fits KVH M2 / M3)

## Power Mounts for the M1



PMA-5U-7LSS

### Aft For M1 (light bar option)

- 5" PMA-5U-7L    16" PMA-16U-7L
- 5" PMA-5U-7LSS    24" PMA-24U-8L
- 10" PMA-10U-7L    36" PMA-36U-8L

### S.S. Aft For M1 (light bar option)

- 5" PMA-5U-7LSS

### Aft For M1 (NO light bar option)

- 5" PMA-5U-7



PMA-5U-7L

### FWD For M1 (light bar option)

- 5" PMF-5U-7L
- 10" PMF-10U-7L

### FWD For M1 (NO light bar option)

- 5" PMF-5U-7
- 10" PMF-10U-7

## Low Profile Satdome Adapters



- AMA-10** (Satdome adapter for Trac 252)
- AMA-16** (Satdome adapter for KVH M2/M3)
- AMA-16 + ADAM31** (Satdome adapter for KVH M1)
- AMA-18** (Satdome adapter for KVH 18")
- AMA-24** (Satdome adapter for KVH 24")
- AMA-32** (Satdome adapter for KVH M9, F77, V7 & F B500)
- AMA-C3** (Satdome adapter for KVH C3)
- AMA-10+SVTTADAPT** (Satdome adapter for KVH FB250 (14") & F33)

### AMA-W

(Adjustable wedge from 0 to 12 deg.)



## Satellite Antenna Pole Mounts

Our Satellite Antenna Pole Mounts are constructed from high quality marine grade aluminum tubing with an Aluminum Dia Cast Base and Top, then treated with an anodized primer and then finished with a brilliant white powder coated finish. Available in 9" to 10' lengths. The last number at the end of the part number indicates the Pole length desired.

### 5" Fixed Pole Mount (welded top and bottom plates)

- AM-M3 (3" dia. Pole 5" Tall for KVH M2 / M3 with Welded Base/Top)
- AM-M5 (3.5" dia. Pole 5" Tall for KVH 18")

### Pole Mount, you determine the height \*\* (cast top and cast bottom)

- AP-3A- (1' - 10') (3" dia. Pole for Trac 252)
- AP-3A+SVTTADAPT- (1' - 10') (3" dea. Pole for KVH FB250 (14") & F33)
- AP-3M3- (1' - 10') (3" dia. Pole for KVH M2 / M3)
- AP-4B- (1' - 10') (4" dia. Pole for KVH 18")
- AP-4C- (1' - 10') (4" dia. Pole for KVH C3)
- AP-4D- (1' - 10') (4" dia. Pole for KVH 24")
- AP-4R-M3 (1'-10') (4" dia. Pole for Raymarine dome & KVH M2 / M3)
- AP-4U-M3 (1'-10') (4" dia. Pole for Furuno, JRC or Koden 2kW & KVH M2 / M3)

\*\*Note: (1'-10') = You pick the height of your pole from 1' up to 10'. For example a 2' pole for KVH M5 is part# AP-4B-2.



(AM-M3)

(AP-4R-M3)

(AP-4B-1)

**Custom Mounts** SEAVIEW can design and fabricate for most any custom application. Please contact us for a quote.



**PYI INC.**  
12532 Beverly Park Road  
Lynnwood, WA 98087

1-800-523-7558  
www.pyiinc.com

**Seaview Europe**  
ZI du Capitou, 85 rue Louis Lepine  
83600 Frejus - France

Tel/Fax: +33494532770  
Mob: +330627386837  
www.seavieweurope.com

